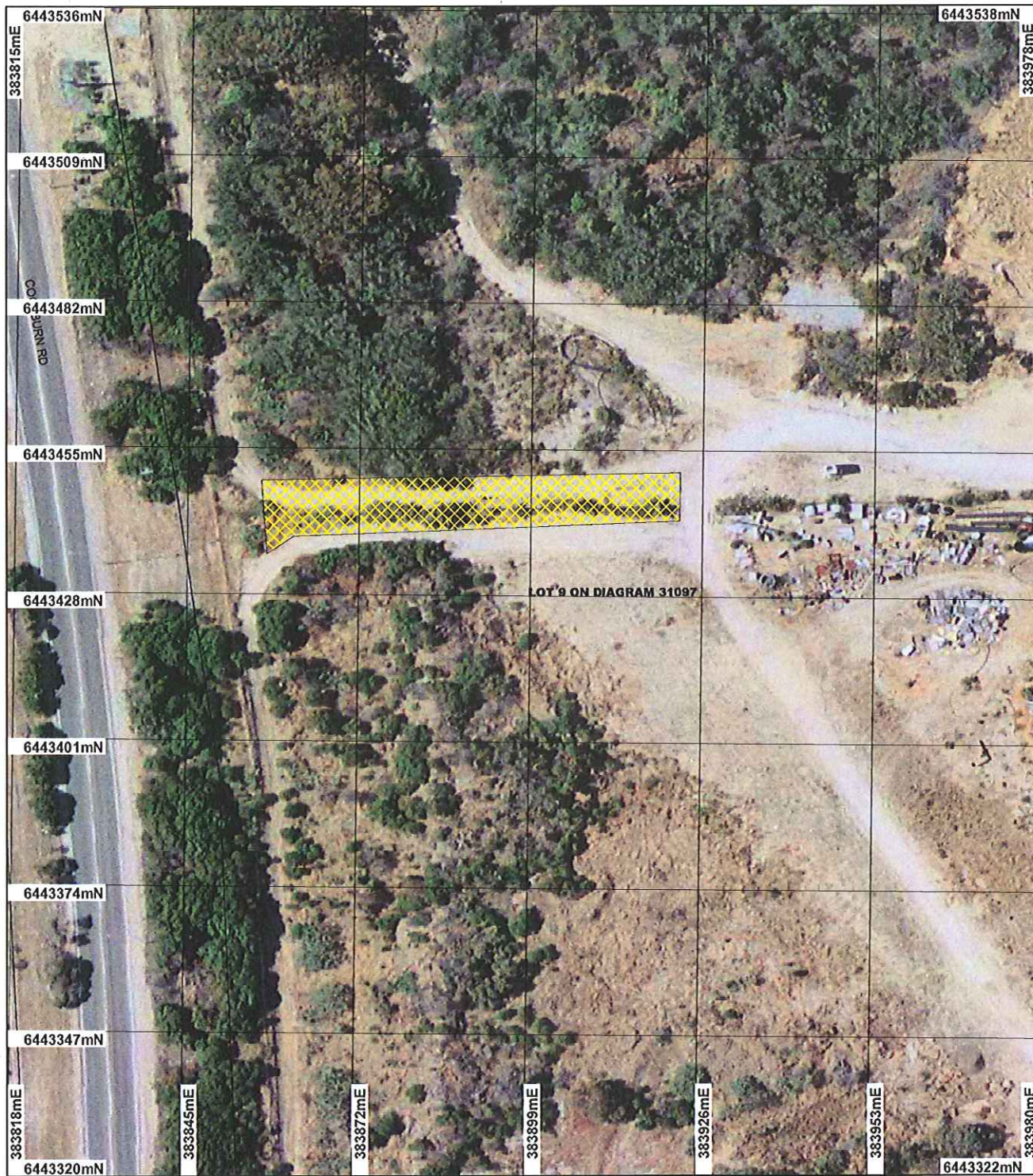


# Plan 1580/1d



## LEGEND

### Clearing instruments

- Areas Subject to Conditions
- Areas Approved to Clear
- Road Centrelines - DLI 1/5/04
- Cadastre - DLI

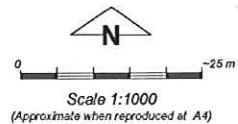
### Towns - DLI 8/04

### Swan Coastal Plain Central 20cm Orthomosaic - DL106

### Cadastre for labelling - DLI

- Freehold
- Crown Reserve
- State Forest / Timber Reserve (cont)

- Marine Park
- Crown Lease
- Lease / Reserve
- Lease on State Forest / Timber Reserve
- Public Roads
- Unallocated Crown Land
- Water



### Geocentric Datum Australia 1994

Note: the data in this map have not been checked. This may result in geometric distortion or measurement inaccuracies.

*Kim Taylor* Date 29/12/05

Kim Taylor  
Officer with delegated authority under Section 20 of the Environmental Protection Act 1986

Information derived from this map should be confirmed with the data custodian acknowledged by the agency acronym in the legend.



WA Crown Copyright 2002

\* Project Data. This data has not been quality assured. Please contact map author for details.